

**In Memory of Our Angels...
We Remember Them...**

*At the rising of the sun and its going down,
We remember them.*

*At the blowing of the wind and the chill of Winter,
We remember them.*

*At the opening of the buds and in the rebirth
of Spring, We remember them.*

*At the blueness of the skies and in the warmth
of Summer, We remember them.*

*At the rustling of the leaves and in the beauty
of Autumn, We remember them.*

*At the beginning of the year and when it ends,
We remember them.*

*As long as we live, they too will live;
For they are now a part of us as we remember them.*

*When we are weary and in need of strength,
We remember them.*

*When we are lost and sick at heart,
We remember them.*

*When we have joy we crave to share,
We remember them.*

*When we have decisions that are difficult to make,
We remember them.*

*When we have achievements that are based on
theirs, We remember them.*

*As long as we live, they too will live;
For they are now a part of us,
As we remember them.*

From Gates of Prayer, Reform Judaism Prayerbook

*Tucson Clean & Beautiful
in partnership with
Council Member Shirley C. Scott
City of Tucson Ward IV Council Office
Tucson Parks and Recreation Department
and Pima County Natural Resources,
Parks & Recreation*



Tucson Parks and Recreation
A Nationally Accredited Agency

Children's Memorial Garden



*“As long as we live, they too will live;
For they are now a part of us,
As we remember them.”*

Tucson Clean & Beautiful

P.O. Box 27210

Tucson, AZ 85726

(520) 791-3109

tcb@tucsonaz.gov

www.tucsoncleanandbeautiful.org

Children's Memorial Park at the Rillito River and Children's Memorial Garden at Michael Perry Park

Two Tucson area Children's Memorials are tributes to children who have died in our community.

Parents and guardians of deceased children may request name engravings at either or both park sites.

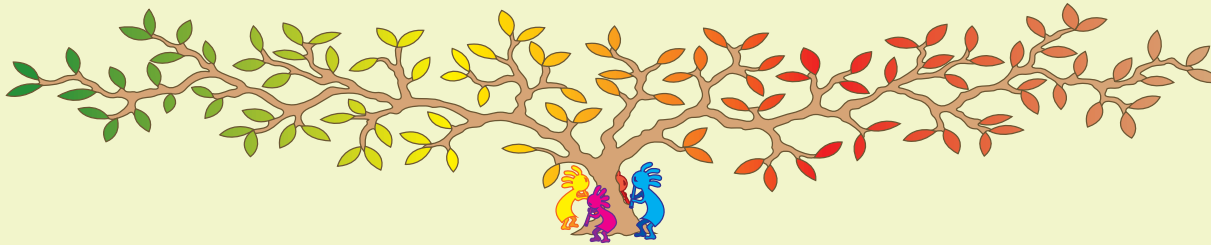
A limited number of commemorative trees are also available for purchase and dedication to help improve the adjacent Pantano Wash Linear Park.

Call (520) 791-3109 for more information.

The Children's Memorial Garden, dedicated in 2011, is at Michael Perry Park, a City of Tucson park at 8700 E. Arbor St. on the Pantano Wash south of Golf Links Rd. and Pantano Parkway. The plaza features a tree sculpture depicting the seasons.

The original Children's Memorial Park, a Pima County neighborhood park at 4851 N. 15th Place, was rededicated in 1987 on the north bank of the Rillito River path west of Oracle Rd., rebuilt after the 1983 floods. This site features two sculptures - "Omni", created in 1978 by 700 boys and girls at a summer camp; and "The Magic Carpet" donated by the Thomason Family in 2002.

Both sites feature a playground, picnic areas, multi-use path, and sports courts.



This park is a community partnership made possible by the City of Tucson, Pima County, Tucson Clean & Beautiful and other organizations.

ENGRAVING REQUEST FORM

To have your child's name engraved, the form must be signed by a parent or legal guardian.
Check should be payable to Tucson Clean & Beautiful

Select location(s): [Children's Memorial Park at Rillito River [Children's Memorial Garden at Michael Perry Park

Child's Name (character limit 25 spaces) _____

Parent/Guardian _____ Phone _____

Address _____ Street _____ City _____ State _____ Zip _____

Engraving \$65 for one site, \$120 for both \$ _____ Additional Donations \$ _____
Call (520) 791-3109 for payment by phone, or mail with check

Total \$ _____ Tucson Clean & Beautiful, P.O. Box 27210, Tucson, AZ 85726

Parent or Guardian Signature Required _____

Date _____