

# PLANTING THE FUTURE

GROWING & COMMUNITY



TUCSON  
CLEAN &  
BEAUTIFUL INC.



# EXECUTIVE DIRECTOR

## — TOM ELLIS —

This year, Tucson Clean and Beautiful said goodbye to our longtime executive director, Joan Lionetti. Joan led and built the brand that is Tucson Clean and Beautiful and Trees for Tucson. The Board of Directors, staff, members, and volunteers of Tucson Clean and Beautiful wish Joan the best in her retirement. We begin our new journey committed to doubling the effort to achieve the vision of a clean, shaded, sustainable Tucson and Pima County.

Working with each other, adopting parks, streets, schools and public spaces, planting and maintaining trees to shade our future, we grow community. It is more than beautification and planting trees. It is about bringing neighbors together and working toward a common goal - improving our environment and creating a better quality of life for everyone. This endeavor depends on you, and our efforts are more important than ever! Only together can we create a healthier, more sustainable future. Join us on this vital journey, planting the future, growing community.





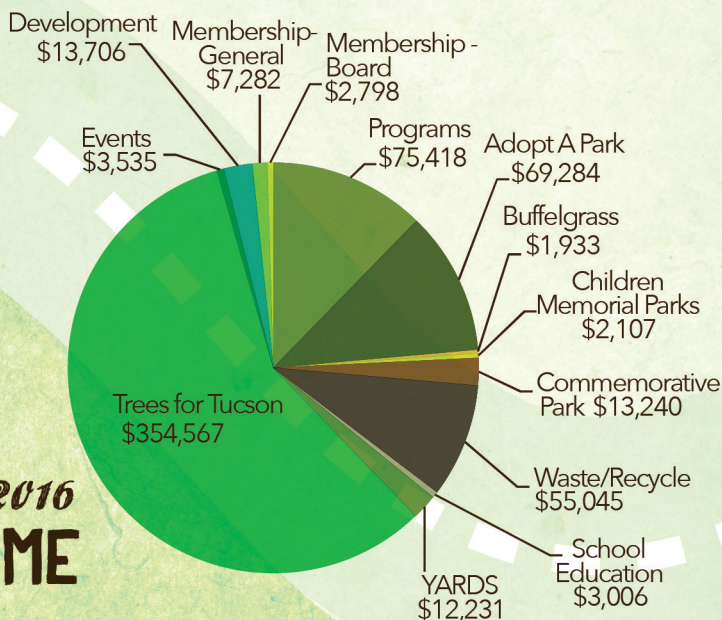
# TABLE OF CONTENTS

Executive Director's Letter.....	1
Financial Report.....	3
Board of Directors & Staff.....	4
Adopt-a-Park & Public Sites.....	5
Volunteer Groups.....	7
Waste Reduction/Recycling.....	9
Trees for Tucson.....	11
Green Jobs Training.....	15
Commemorative Tree Park & Children's Memorial Park.....	16
Sponsors.....	17
Donors & Members.....	19
Community Awards.....	21
Mission Statement.....	22

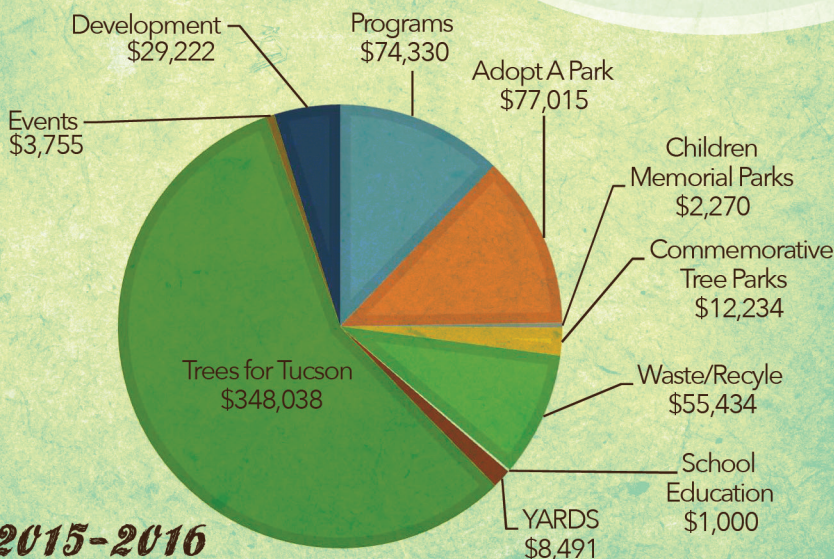


# FINANCE REPORT

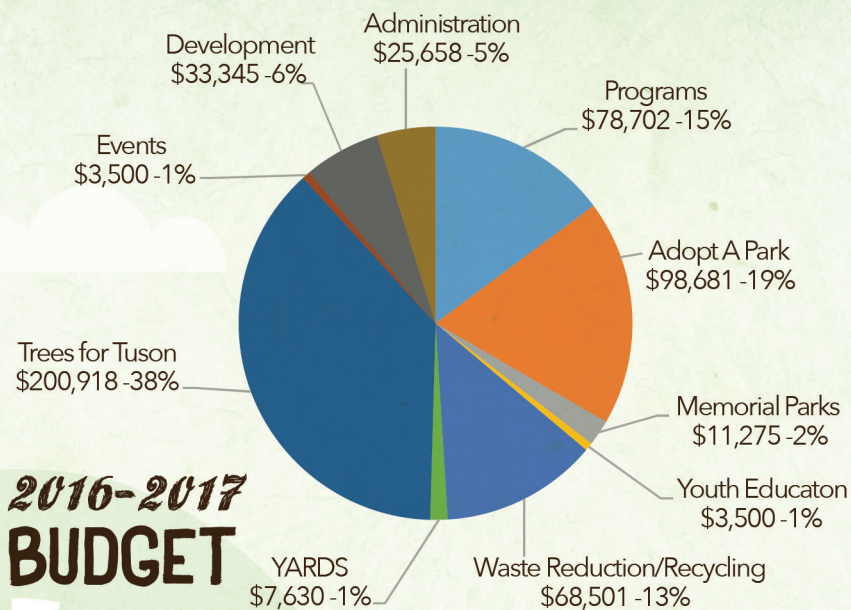
## 2015-2016 INCOME



## 2015-2016 EXPENSE







# BOARD *of* DIRECTORS

*President* MICHAEL JETTE

*Vice President* MAXIMILIANO TORRES

*Secretary* JOSEPH MAHER JR. AIA

*Treasurer* BARBARA RICCA

*Past President* SALLY GESTAUTAS

*Member at Large* RICHARD BLOCK  
JASON TANKERSLEY

*Members* Nandi Muhammad, Placido dos Santos, Larry Robinson, Dave Stadle, Barbara Warren, Ann Marie Wolf, Ronni Kotwica, Alix Rogstad, Michael Peel, Shawn Calendine, Meredith Lipscomb, Beth Gorman

*Staff* Tom Ellis, Katie Gannon, BJ Cordova, Sofia Angkasa, Beki Quintero, Rocky Yosek, Garrett Henderson



# ADOPT-A-PARK

## *and Public Sites*

**312**  
ADOPTED  
SITES

**28**  
ADOPTED  
GATEWAYS

**97**  
ADOPTED  
STREETS

**38**  
ADOPTED  
WASHES

**109**  
ADOPTED  
PARKS





**7,650**  
VOLUNTEERS

**16,073**  
HOURS

**1,053**  
CLEAN  
-UPS

**\$378,685**  
COMMUNITY  
VALUE

This popular program continues to grow each week with new groups and volunteers joining to clean up parks, streets, and washes and provide valuable services to our community. We love our volunteers!



# OUR COMMITTED Volunteers

A Mountain Community Association  
ABCO Solar  
Academy Junior Civitan  
Achieve Builds Confidence - C-301  
Advanced Open MRI of Tucson  
African American Cultural Club - AACC  
(Cienega High) AND Santa Rita High School  
Alano Club  
Alpha Nu Chapter of Alpha Kappa Psi  
Alta Vista High School - National Honor Society  
Amphi High School - Panther Partners Club  
Amphi NA  
Apollo Middle School - National Junior Honor Society  
Apollo Middle School-AVID  
Arizona College Prep Academy  
Arizona Students' Association  
Arroyo Ridge HOA  
AZ Air Nat'l Guard 162nd Fighter Wing  
Junior Enlisted Council  
AZ Trees Please  
AZMasquerade, LLC  
B.A.T. Group  
Barrio Centro NA  
Barrio Hollywood Neighborhood Association  
Barrio Kroeger Neighborhood Association  
BASIS Buffel Bandits (BASIS North Tucson Charter School)  
BBVNA (Broadmoor-Broadway Village)  
Urban Foresters  
BePositiveTucson  
Betty Ord Friends and Family  
Bischoff and Associates  
Blenman Neighborhood Association  
BLX Skateshop  
Brichta Neighborhood/Citizens to Restore Our Wash (CROW)  
Cabrini NA Steering Committee  
Cactus Pricks LLC  
Calvary Chapel Christian School  
Campbell-Grant NE  
Neighborhood Assoc.

Casas Adobes Rotary  
Catalina Foothills Cyclists  
Catalina High School,  
Community Based Class  
Catalina United Methodist  
Church Youth Group  
Catalina Vista Neighborhood Association  
Cavalier King Charles Spaniel Club of Southern Arizona  
Changemaker High School  
Chapel Haven West  
Children's Museum Tucson Youth Board  
Church of the Painted Hills  
City High School  
Comfort Memorial Project  
Cooper Center for Environmental Learning  
Cope Community Services - AGAVE  
COPE Community Services - Los Altos  
Cox Communications-Construction  
CSL Plasma - Tucson  
Danza de Tonantzin  
Davis-Monahan Legal Office  
Del Webb Active Adults  
Desert Hawk Crew  
Desert Sharks PHC (Parrot Head Club)  
Desert Sky Community School  
Dink's Crew  
Dismas Charities, Inc.  
Diverse Dance  
DMAFB - 25th OWS  
DMAFB - 355 CES Booster Club  
DMAFB - 355 LRS  
DMAFB - 355 OSS AFE  
DMAFB - Air Force Sergeants Association (AFSA) Chapter 1261... 1621  
DMAFB - Air Traffic Control Tower  
DMAFB - Desert Lightning Team Top 3  
DMAFB - The Loft  
DMAFB 25th Operational Weather Squadron  
DMAFB 355 Logistics Readiness Squadron/LGRV  
DMAFB 355 Medical Group c/o

AMDS/SGPE  
DMAFB 355 MXG Quality Assurance Flight  
DMAFB 355 OSS/IN (NCOIC, Intel Operations 355 OSS/INO)  
DMAFB 48th RQS Aircrew Flight Equipment  
DMAFB 612 ACOMS  
DMAFB 612 ACOMS First Six Association  
DMAFB 612th Air & Space Operations Center  
DMAFB 923 AMXS/79 AMU  
DMAFB Detachment 1/548 ISRG  
DMAFB Detachment 1/548 ISRG  
DMAFB-12 Air Force A2  
Dodge/Flower NA & TNBC (Tucson Neighbors Building Community)  
DoubleTree Suites by Hilton Tucson Airport  
Dunbar Spring NA  
Eco Gro LLC  
El Cortez Heights NA  
El Presidio Neighborhood Association  
El Sendero  
Elisa Gastelum Memorial Foundation  
Engineering and Environmental Consultants  
Fairwinds - Desert Point Retirement Community  
Feldman's Green Team  
Flowing Wells Junior High School - National Junior Honor Society  
Foothills Stables  
Fred G. Acosta Job Corps Center  
Friends of Fort Lowell Park  
Friends of Himmel Park  
Friends of Si Schorr Bike Path  
Friends of the 36th Street Trailhead  
Friends of the Pantano River  
Friends of Urban Wildlife  
Fry's Food Store #19  
Garden District NA  
GEICO Green Team  
Girl Scout Troop 1616  
Groves-Lincoln Park Neighborhood Association



Grow With the Flow Permaculture  
 Handi-Care, Inc.  
 Hedrick Acres Neighborhood Association  
 Highland Vista NA  
 Imago Dei Middle School  
 Iron Horse Neighborhood Association  
 Jefferson Park Neighborhood Association  
 Jewish Community Center  
 Jibu Youth Foundation, Inc.  
 JW Marriott Starr Pass Resort &  
 Spa Green Team  
 Keeling Neighborhood Association  
 Kino Rotary Club  
 Kino School  
 Knights of Thor  
 La Madera Neighborhood Association/  
 Wash Project  
 LUV2HIKE  
 Luz Academy - National Honor Society  
 M Livingston and Friends  
 Maxim Staffing Solutions  
 Meet Me at Maynards  
 Menlo Park Neighborhood Association  
 Mercado District of Menlo Park  
 Midvale Park Neighborhood Association  
 Milagro Cohousing Community  
 Miramonte Neighborhood Association  
 Mirasol Recovery Centers  
 Mitman NA  
 Mountain/1st Neighborhood Association  
 National Charity League, Inc. Tucson  
 Chapter  
 Northwest Landscaping  
 Occupy Tucson  
 Ocotillo Ridge Elementary Teachers and  
 Staff  
 Optum  
 P.U.P.S.  
 Palo Verde Church of Christ  
 Palo Verde NA  
 People of the Peter  
 Howell Neighborhood  
 Peter Howell Neighborhood Association  
 PHC/PTK  
 Phil Schlesinger Civitan Club  
 Pie Allen Neighborhood Association  
 Pima Community College  
 Pima Community College Desert Vista  
 Campus  
 Pima County Adult Probation  
 Pima County Juvenile CREW  
 Pima Masonic Lodge #10  
 Pima Partnership High School  
 Pima Street Hockey League  
 PopCycle  
 PPER, Youth Build AmeriCorps  
 Radisson Suites Tucson  
 Raven Ranch  
 Renew/CPES  
 Resourceful Tucson

Richland Heights Neighborhood  
 Association  
 Rincon Country East RV  
 Resort ~ Vespers  
 Rincon Heights Neighborhood  
 Association  
 Rincon High School Exceptional  
 Education  
 RISE Services Inc.  
 Rising Star Baptist Church  
 Evangelism Team  
 Rita Verde HOA  
 Rotary Club of Tucson Sunset  
 San Clemente NA  
 Scouts of Rita Ranch  
 Sky Islands at Rogers' Commons.  
 Society of Hispanic Professional  
 Engineers - University of Arizona  
 Chapter (SHPE UA)  
 Sonoran Sunrise Grove, ADF  
 South Park Neighborhood  
 Association  
 Southern Arizona AIDS Foundation  
 Southern Arizona Climbers Coalition  
 Southern Arizona Geocachers  
 St. Francis Chrysalis Men's Group  
 St. Francis de Sales Knights of  
 Columbus # 6848  
 St. Michael's Parish Day School  
 Stella Mann Neighbors  
 Sunnyside High School - Life Skills  
 Program  
 Sunnyside Neighborhood  
 Association  
 Sunnyside Neighborhood  
 Association, c/o Desert Retreat  
 Sustainable Solutions for Arid Lands  
 Tax Pals, Inc. (C.A.C.T.U.S. Club)  
 Templo de Alabanza Nuevo  
 Comienzo Church  
 TEP Professional  
 Development Group (PDG GIVES)  
 Terra del Sol Neighborhood  
 Association  
 Terracon Consultants, Inc.  
 The Meadows  
 The Racqueters  
 Thunder Mountain  
 Moose Lodge 2475  
 Toltecalli Academy  
 Tucson Area Wiccan-Pagan Network  
 Tucson Atheists Meetup Group  
 Tucson Breakfast Lions Club  
 Tucson Disc Golf Association  
 Tucson Fire Department Station 14  
 Tucson International Academy  
 Midvale NHS  
 Tucson Orthopaedic Institute  
 Tucson Park West # 4  
 UA - Zeta Beta Tau Fraternity

UA-African Students' Association  
 UA-Alpha Phi Omega Chapter  
 Theta Iota Fraternity  
 UA-Alpha Pi Omega Sorority, Inc.  
 UA-Alpha Sigma Phi Fraternity  
 UA-Arizona Assurance Club  
 UA-Beta Theta Pi Fraternity  
 UA-Gamma Alpha  
 Omega Sorority, Inc.  
 UA-Gamma Beta Phi Honor Society  
 UA-Honors Student Council  
 UA-Kappa Delta Chi, Inc.  
 UA-Kappa Sigma Gamma  
 (Rho Chapter)  
 UA-Lambda Theta Alpha Latin  
 Sorority, Inc.  
 UA-Lambda Theta Phi Latin  
 Fraternity, Inc.  
 UAMC 5 East  
 UA-National Society of Black  
 Engineers  
 UA-National Society of Collegiate  
 Scholars (NSCS)  
 UA-Omega Delta Phi Fraternity, Inc.  
 UA-PAJ.N. (Professional  
 Achievements in Nursing)  
 UA-Phi Delta Chi Professional Pharmacy  
 Fraternity - Alpha Nu Chapter  
 UA-Phi Delta Theta International  
 Fraternity  
 UA-Sigma Lambda Beta  
 International Fraternity, Inc.  
 - Kappa Alpha Chapter  
 UA-Sigma Lambda Gamma Nat'l  
 Sorority, Inc. (Beta Gamma Chapter)  
 UA-Sigma Phi Epsilon Fraternity  
 UA-Society of Mining and  
 Metallurgy and Exploration  
 UA-Student Clubs in the Natural  
 Resources and the  
 Environment program  
 UA-Tau Beta Sigma  
 UA-The Iota Tau Chapter of Alpha  
 Kappa Alpha Sorority Incorporated  
 UA-Theta Chi Fraternity  
 UA-Theta Tau-Chi Chapter  
 University of Arizona Rotaract Club  
 Vail Vikings Youth Spirit and  
 Football Association  
 Victoria Group Home  
 Visit Tucson  
 Vista del Monte NA  
 Waterfall Economicis Caldwell  
 Hanshaw & Villamana  
 Whole Foods Market  
 Wilshire Heights Neighborhood  
 Association



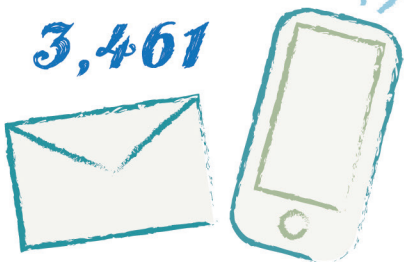
# WASTE REDUCTION

*Reduce, Reuse, Recycle*

## RECYCLING *Directory*

CALLS & EMAILS FOR  
RECYCLING HOTLINE:

**3,461**



## MASTER *Recycler* CLASS

A hands on educational program is offered each year to engage citizens. Master recycler participants learn what is recyclable, what goes to household hazardous waste and how food waste is composted.

**9 GRADUATED**



## ELECTRONIC *Recycling*

**2 ELECTRONIC  
RECYCLING  
COLLECTION  
EVENTS**





E PLURIBUS RECYCLES  
PLAY IS AN EDUCATIONAL  
AND FUN WAY TO TEACH  
STUDENTS IN KINDERGARTEN  
THRU FOURTH GRADE  
ABOUT THE VALUE  
AND IMPORTANCE  
OF RECYCLING THROUGH  
AN INTERACTIVE PLAY

## E PLURIBUS *Play*

49 SHOWS

3,280  
STUDENTS  
ATTENDED

## RUMBA

155 PARTICIPANTS

36 ENTRIES

RUMBA IS AN ART  
SHOW THAT EDUCATES  
THE YOUNG AND  
OLD ON REUSING  
RECYCLABLE  
MATERIALS  
TO CREATE ART.





# TREES

## for tucson

WHEN YOU PLANT A TREE,  
*you grow the future*

8,926 TREES  
DELIVERED/  
PLANTED IN 2016  
160,800 SINCE 1989

---

\$44 MILLION OF  
ADDED AESTHETIC  
(PROPERTY) VALUE  
SINCE 1989

19 MILLION LBS OF CO<sub>2</sub>  
REDUCTION IN 2015

---

209 MILLION LBS  
OVERALL CO<sub>2</sub> REDUCTION,  
OR 94,800 METRIC TONS

---

134 MILLION GALLONS  
OF RAINFALL INTERCEPTED  
IN 2015

159 MILLION CUMULATIVE  
KWH OF ELECTRICITY SAVED

\$71,000,000 ECONOMIC  
VALUE OF TREES  
PLANTED SINCE 1989

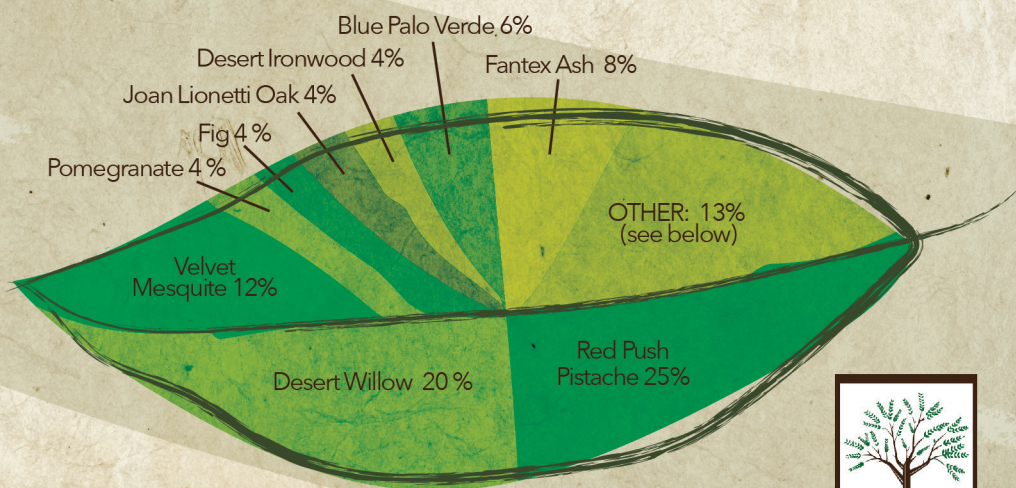


# TREE DIVERSITY = *Forest Health*

## 2016 TREES

TOTAL NATIVE TREES 5,237  
TOTAL NON-NATIVE TREES 3,689

## 2016 TREES SOLD BY SPECIES



Netleaf Hackberry 3%, Texas Ebony 2%,

Chinese Elm 1%, Vitex 1%, Palo Brea 1%,

Screwbean Mesquite 1%, Catclaw Acacia 1%, Loquat 1%,

Foothills Palo Verde 1%, Chitalpa 1%





# TREES FOR *Schools*

OUR INTERACTIVE *school tree plantings*  
GIVE STUDENTS AN OPPORTUNITY  
TO LEARN ABOUT *tree biology* AND THE  
*essential role* TREES PLAY IN OUR LIVES



THIS YEAR WE  
ENGAGED 2,236  
STUDENTS IN  
TREE PLANTING...

AND PLANTED  
248 TREES  
IN SCHOOLS

---

WE ENGAGED 670 YOUTH IN HANDS-ON  
ENVIRONMENTAL LEARNING, HELPING BUILD THE  
*next generation of environmental stewards.*



# TREES FOR *neighborhoods*

**SITE**  
EVALUATION

**VOLUNTEER  
SUPPORT**

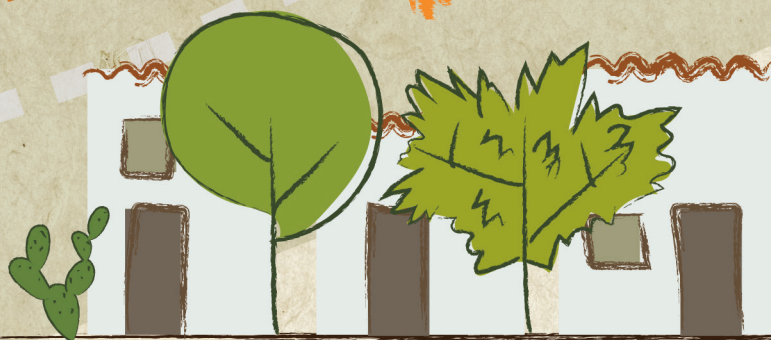
**PLANTING  
DEMONSTRATIONS**



**TREE CARE  
WORKSHOPS**

**TOOL  
LIBRARY**

**COMMUNITY  
/NEIGHBORHOOD  
TREE PLANTING**



WE ENGAGED **381** ADULTS IN PUBLIC TREE PLANTING

WE TAUGHT **156** ADULTS  
TREE MAINTENANCE AND TREE CARE

WE HELPED PLANT **248** NEIGHBORHOOD TREES



# GREEN JOBS *Training*

~ Empowering people, ~  
~ growing community ~

INVESTING IN PEOPLE AND COMMUNITIES,  
WE INTEGRATE LANDSCAPE AND LIFE SKILLS  
TRAINING WITH COMMUNITY ACTION PROJECTS.

## Y.A.R.D.S.

YOUTH ACHIEVING  
RESOURCE  
DEVELOPMENT  
SKILLS

92 GRADUATES  
SINCE 2010



NEW

"RESTORING  
LIVES,  
BUILDING  
COMMUNITY"



REMEMBER, HONOR,  
*Celebrate*

906  
TREES  
PLANTED  
TO DATE

## *Commemorative* **TREE PARKS**

Pantano Commemorative Tree Park  
El Paseo de los Arboles

## **CHILDREN'S** *Memorial Parks*

Children's Memorial Garden at Michael Perry Park  
Children's Memorial Park on the Rillito River

1,676 NAMES  
ENGRAVED





# OUR SPONSORS







**JOIN  
OUR  
TEAM**





# MAJOR DONORS

## *& In-kind Donations*

AAA Arizona  
Advisors in Real Estate, Inc.  
Arizona Lotus Corp  
ASDM Saturday Docents  
Desert Metals Recycling  
Desert Retreat Mobile  
Home & RV Park  
DSZ, Inc.  
EcoSense Sustainable  
Landscapes  
Edible Baja Arizona  
Eegee's  
Empire Machinery/Empire  
Charitable Foundation  
Embassy Suites by Hilton  
Tucson Paloma Village  
Enterprise Fleet Management  
Game On Media Lab, Inc.  
(My Dream Home TV)  
GeoInnovation  
Goodwill Industries of  
Southern Arizona  
Kalil Bottling Co.  
Keep Arizona Beautiful  
Local First Arizona  
Madaras Gallery  
Marana Chamber  
of Commerce  
Mrs. Green's World  
Parent Heart Watch  
Patio Garden Club

Physicians for  
Social Responsibility  
Q'Straint Sure-Lock Sales Team  
Raytheon Missile Systems  
Richard A. Block, P.C.  
SAHBA Home Show  
Scott Neeley Architecture LLC  
Shepard Exposition Services  
Southern Arizona Buffelgrass  
Coordination Center  
Southern Arizona Green  
Chamber of Commerce  
St. Michael's Parish Day  
School-Student Council  
Starbucks Coffee Co.  
Sycamore Canyon  
Conservation Foundation  
TCC Wireless - Verizon  
Authorized Reseller  
TerraSystems Southwest Inc.  
Thrivent Financial  
TMM Family Services, Inc.  
Tucson Airport Authority  
Tucson Federal Credit Union  
Tucson Recycling  
& Waste Services  
Tucson Sunrise Rotary  
Urban Forestry Organization  
Venture Catalyst, Inc.  
Visit Tucson

# TOTAL \$384,162



# MEMBERSHIP

Linda Acosta  
Wendy Adams  
Kae Adams  
Ellen Alster  
Vonda Lee  
& Gary Ashberger  
Cheryl Avila  
Theodore & Cheryl Bahn  
Annette Baldwin  
Juan Barba  
Maria Barcelo  
Fred Barton  
Ramon Batista  
Samantha Baxter  
Lisa Bazan  
Deron & Jennifer Beal  
Marley Beard  
Hubert Bell  
Thomas & Marla Berry  
David Bilgray  
Gayle Blair  
Mike & Lori Block  
Richard Block  
Sandra Bobb  
Betsy Bolding  
Dennis Bonilla  
Carol Borges  
James & Bonnie Bostrom  
Sandra & Sol Brody  
William Broersma  
Sue Brown  
Lisa Brunner  
Jane Butler  
Shawn Calendine  
Carianne Campbell  
Jessica Castillo  
Al & Sharyn Chesser  
Robert Clark  
Marsha Cohen  
Elizabeth Coleman  
Edward Collette  
B.J. & Hanna Cordova  
Gay Cordova  
Michael Crumly  
Kevin Dahl  
Judy Dare  
Roberto Davila  
Thomas Delgado  
Patricia DeWitt  
Mary Dickinson  
Susan Dubow  
Mark & Linda Ekstrum  
Linda Ellinor  
Tom & Liz Ellis  
Scott & Nancy Ellis  
Dave & Mary Ann Elwood  
Emily Endreson  
Kirsten Engel  
Nancy Eswein  
Isaac Figueroa  
Richard & Mary Fimbres  
Tay Fitzgerald  
John & Mary Fitzpatrick

Georgia Fitzsimmons  
Barry Foster  
Marsha Fowler  
Kirsten French  
Albert Fritz III, D.O.  
Jeffrey Gardner  
Patricia Gehlen  
William Gerken  
Sally Gestautas  
Valerie Golembiewski  
Beth Gorman  
Gale Greene  
Linda Greene  
Betty Gunn  
Gail Gurney  
Diane Gwozdz  
Tim & Cathy  
Hackman  
Gary & Amy Heinfeld  
Tonya & John Leigh  
William Halvorson  
Leo Hartke  
Stephen Hoffmann  
Carla Huiskamp-Gray  
Robert W. & JoAnne  
Hungate  
Pamela Jay  
Angela Jenkins  
Marcella Jenkins  
Michael Jette  
Arthur Joachim  
Rick & Judy Johnson  
Susan &  
Bob Johnstone  
Keith Kaback  
Ken & Jane Kalina  
Kathleen Kearney  
Barbara Kelly  
Denise and Dean  
Kendle  
Nicole Kessler-Snook  
Lisa Kirk  
Jim Knoll  
Judith Kohn  
Dee Korich  
Dana & Richard  
Kormash  
Ronni & Roland  
Kotwica  
Lorna Kraemer  
Debra Kruse  
George & Susan Kuck  
Lois Kulakowski  
Ann Lancero  
Janet Landis  
Connie, Heiko and Kai  
Langrehr  
Beth Larsen  
Larry Lautzenheiser  
Matthew LeComte  
George Ledbetter  
Patricia Tremblay  
Sharon Levin

Joseph Linville  
Joan Lionetti  
Carol Livingston  
Maria Lopez  
Michelle Lorenzini  
Jill Lundquist  
Murph Lyman  
Terry Madrid  
Joseph Maher, Jr.  
Dimitri Manos  
Frank & Janet Marcus  
George Marshall  
Mary Martinez  
Sara Mason  
Brenda Mathews  
Barbara McCauley  
Margaret McDonald  
Mike McGovern  
Lorna McKelvy  
Mark & Cathy McKenna  
Joy Mehulka  
Jamie Merriam  
Marva Merritt  
Mead Mier  
Joseph Miller  
Joel Mitchell  
Linda Moffett  
Leone Mohney  
Janice Monk  
Mark Moore  
Leon & June Moore  
Kurt & Davita Mueller  
Nandi Muhammad  
Janice Murphy  
Fred Narcaroti  
Kristie Nelson  
Philip Nenon  
Pamela Nirenberg  
Eldora North  
Irene Ogata  
Sharon Olbert  
Susanne Olkkola  
John Olson Sr.  
Bob O'Malley  
Clarence O'Neil  
Betty Ord  
Stacy Parker  
Nancy Peasley  
Michael Peel  
Eric Peery  
Vicki Pippin  
Emily &  
Thomas Poley  
Gregg Ponder  
Karen Porter  
Anthony Poulton  
Jacob Prietto  
Daniel Redondo  
Paul Reese  
Barbara Ricca  
Alice Roe  
Alix Rogstad  
Brit Rosso

Laura Sagerman  
Minut Sanden  
Sue Sanders  
Paula Schlusberg  
Ryan Schoenhof  
Mary Lou Schultz  
Gary Scrivner  
Katherine Sementilli  
Leslie Siggs  
Lee Anna Simons  
Nancy & Mark  
Siner  
Brenda & Lee Smith  
Kermit Smith  
Pamela Sorock  
Christina Soukup  
Mr. & Mrs. John &  
Elizabeth Spilotro  
Gentry Spronken  
Dave Stadle  
James Stanton  
Stacy Stauffer  
Kirsten & Bob  
Stephens  
Dr. Thaddeus  
Regulinski  
Sloan Stevens  
David Stevenson  
Pam Stoermer  
Barbara Straub  
Henry Sylvester  
Agatha Tauber  
Sandra Taylor  
Helga Teiwes  
Mary Thiltges  
Eve & Dean Thorburn  
Carl Tootle  
Charlene Vیدن  
Maximiliano Torres  
Kathleen & Eric  
Van Hoesen  
Jack & Carmen  
VanDyke  
Teri Vasquez  
Deborah Vath  
Tommie Waller  
Herman Warrior  
Patricia Waterfall  
Patricia Watrous  
Carol & Neil West  
Mary White  
Karen Wilhelmson  
John Williams  
Stephen Windsor  
Ann Marie Wolf  
Mr. & Mrs. Robert &  
Mary Wolk  
Judie Wright  
Marie Wurr  
Robert Yontz  
Sandy Zeigler  
Peter Zeilenga Jr.



# 2016 Community AWARDS

FOR 25 YEARS OF EXCEPTIONAL VOLUNTEERISM  
IN SUPPORT OF THE TREES FOR TUCSON PROGRAM

*Vonda Lee Ashberger*

IN RECOGNITION OF OUTSTANDING LEADERSHIP  
AND SERVICE TO THE ELVIRA NEIGHBORHOOD

*Oscar Tortosa*

FOR PLANTING 57 NEW TREES AT ELVIRA  
ELEMENTARY SCHOOL AND GROWING  
THE COOLEST SCHOOL CAMPUS

*Andy Townsend*

AN OUTSTANDING GOVERNMENT PARTNER,  
PUBLIC SERVANT, AND CITIZEN VOLUNTEER

*Lorenzo Gonzalez*

THE CANOPY AWARD, IN RECOGNITION OF A 23  
YEAR COMMITMENT TO TUCSON'S URBAN FOREST

*Tucson Electric Power*

THE TREE CHAMPION AWARD FOR A SIGNIFICANT  
COMMITMENT TO TREES FOR SCHOOLS

*Kinder Morgan*







# *Our Mission*

TUCSON CLEAN & BEAUTIFUL, INC. IS A NON-PROFIT ORGANIZATION WHOSE MISSION IS TO PRESERVE AND IMPROVE OUR ENVIRONMENT, CONSERVE NATURAL RESOURCES, AND ENHANCE THE QUALITY OF LIFE IN THE CITY OF TUCSON AND EASTERN PIMA COUNTY.

THESE GOALS ARE ACHIEVED THROUGH EDUCATIONAL & PARTICIPATORY PROGRAMS, IMPLEMENTED WITH BROAD CITIZEN, MULTI-CULTURAL SUPPORT.





**TUCSON  
CLEAN &  
BEAUTIFUL INC.**

P.O. Box 27210

Tucson, AZ 85726

p: 520.791.3109

e: [tcb@tucsoncleanandbeautiful.org](mailto:tcb@tucsoncleanandbeautiful.org)

[tucsoncleanandbeautiful.org](http://tucsoncleanandbeautiful.org)

[treesfortucson.org](http://treesfortucson.org)



[tucsoncleanandbeautiful](https://www.facebook.com/tucsoncleanandbeautiful)



[treesfortucson](https://www.facebook.com/treesfortucson)



[TCBTrees4Tucson](https://twitter.com/TCBTrees4Tucson)



[@treesfortucson](https://www.instagram.com/treesfortucson)

This booklet was designed by Bridget Shanahan